

A close-up photograph of a wooden cabinet with a herringbone grain pattern. The cabinet features two drawers with dark, rectangular handles. The wood is a light, natural tone, and the handles are a dark, possibly black or dark brown, color. The lighting is soft, highlighting the texture of the wood and the metallic finish of the handles.

DECORATIVE  
HARDWARE

*Medallion*<sup>™</sup>





Traditional Pull and  
Knob A in Satin Nickel  
on (Gold) Monona  
Flat Panel in Dove  
Appaloosa on maple



The background of the entire page is a vertical wood-grain texture. A central teal-colored panel is framed by a thin white border. The text is centered within this teal panel.

*Medallion*<sup>™</sup>

## HARDWARE COLLECTION

Distinguish your home with details that leave an impression. The Medallion Hardware Collection features cabinetry elements designed to accentuate your surroundings and showcase your personal style.

Every dazzling decorative option can be found here in our catalog, with appointments and finishes that can help you tastefully customize your kitchen, bathroom, and more.

Down to the last luxurious detail, Medallion is inspired by your life.

# CONTEMPORARY HARDWARE



CONTEMPORARY PULL A  
HW-17796-MB  
Matte Black



CONTEMPORARY PULL A  
HW-17796-SN  
Satin Nickel



CONTEMPORARY KNOB C  
HW-519-SN  
Satin Nickel



CONTEMPORARY PULL D  
HW-A5003-MB  
Matte Black



CONTEMPORARY PULL D  
HW-A5003-SN  
Satin Nickel



CONTEMPORARY PULL E  
HW-54996-DBAC  
Brushed Oil Rubbed Bronze



CONTEMPORARY PULL E  
HW-54996-MB  
Matte Black



CONTEMPORARY PULL E  
HW-54996-PC  
Polished Chrome



CONTEMPORARY PULL E  
HW-54996-SBZ  
Satin Bronze



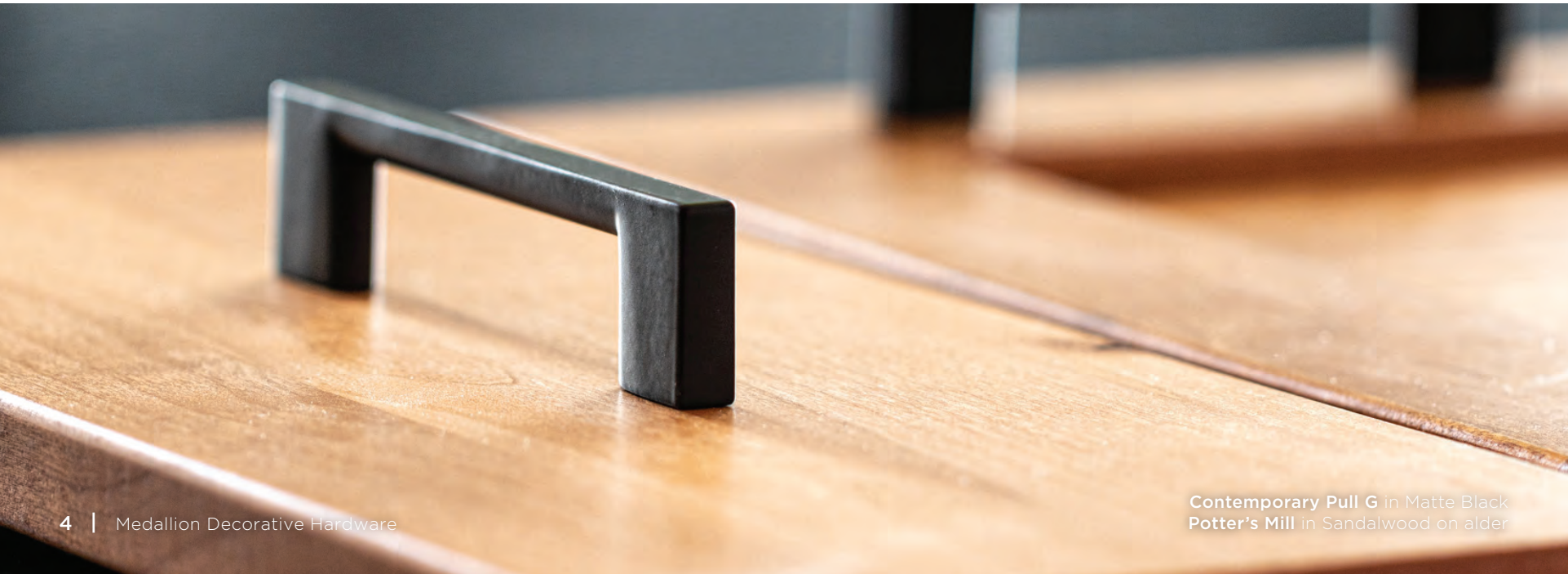
CONTEMPORARY PULL E  
HW-54996-SN  
Satin Nickel



CONTEMPORARY PULL E  
HW-549128-DBAC  
Brushed Oil Rubbed Bronze



CONTEMPORARY PULL E  
HW-549128-MB  
Matte Black





# CONTEMPORARY HARDWARE



CONTEMPORARY PULL E  
HW-549128-PC  
Polished Chrome



CONTEMPORARY PULL E  
HW-549128-SBZ  
Satin Bronze



CONTEMPORARY PULL E  
HW-549128-SN  
Satin Nickel



CONTEMPORARY KNOB F  
HW-40-MB  
Matte Black



CONTEMPORARY KNOB F  
HW-40-PC  
Polished Chrome



CONTEMPORARY KNOB F  
HW-40-SBZ  
Satin Bronze



CONTEMPORARY KNOB F  
HW-40-SN  
Satin Nickel



CONTEMPORARY PULL F  
HW-136-MB  
Matte Black



CONTEMPORARY PULL F  
HW-136-PC  
Polished Chrome



CONTEMPORARY PULL F  
HW-136-SBZ  
Satin Bronze



CONTEMPORARY PULL F  
HW-136-SN  
Satin Nickel



CONTEMPORARY PULL F  
HW-156-MB  
Matte Black



CONTEMPORARY PULL F  
HW-156-PC  
Polished Chrome



CONTEMPORARY PULL F  
HW-156-SBZ  
Satin Bronze



CONTEMPORARY PULL F  
HW-156-SN  
Satin Nickel



CONTEMPORARY PULL F  
HW-176-MB  
Matte Black



CONTEMPORARY PULL F  
HW-176-PC  
Polished Chrome



CONTEMPORARY PULL F  
HW-176-SBZ  
Satin Bronze



CONTEMPORARY PULL F  
HW-176-SN  
Satin Nickel



CONTEMPORARY PULL F  
HW-206-MB  
Matte Black



CONTEMPORARY PULL F  
HW-206-PC  
Polished Chrome



CONTEMPORARY PULL F  
HW-206-SBZ  
Satin Bronze



CONTEMPORARY PULL F  
HW-206-SN  
Satin Nickel



CONTEMPORARY PULL F  
HW-272-MB  
Matte Black



# CONTEMPORARY HARDWARE



CONTEMPORARY PULL F  
HW-272-PC  
Polished Chrome



CONTEMPORARY PULL F  
HW-272-SBZ  
Satin Bronze



CONTEMPORARY PULL F  
HW-272-SN  
Satin Nickel



CONTEMPORARY PULL F  
HW-336-MB  
Matte Black



CONTEMPORARY PULL F  
HW-336-PC  
Polished Chrome



CONTEMPORARY PULL F  
HW-336-SBZ  
Satin Bronze



CONTEMPORARY PULL F  
HW-336-SN  
Satin Nickel



CONTEMPORARY PULL G  
HW-63596-DBAC  
Brushed Oil Rubbed Bronze



CONTEMPORARY PULL G  
HW-63596-MB  
Matte Black



CONTEMPORARY PULL G  
HW-63596-SBZ  
Satin Bronze



CONTEMPORARY PULL G  
HW-63596-SN  
Satin Nickel



CONTEMPORARY PULL G  
HW-635128-DBAC  
Brushed Oil Rubbed Bronze



CONTEMPORARY PULL G  
HW-635128-MB  
Matte Black



CONTEMPORARY PULL G  
HW-635128-SBZ  
Satin Bronze



CONTEMPORARY PULL G  
HW-635128-SN  
Satin Nickel



CONTEMPORARY KNOB H  
HW-859T-DBAC  
Brushed Oil Rubbed Bronze



CONTEMPORARY KNOB H  
HW-859T-MB  
Matte Black



CONTEMPORARY KNOB H  
HW-859T-SBZ  
Satin Bronze



CONTEMPORARY KNOB H  
HW-859T-SN  
Satin Nickel



CONTEMPORARY PULL H  
HW-8593-DBAC  
Brushed Oil Rubbed Bronze



CONTEMPORARY PULL H  
HW-8593-MB  
Matte Black



CONTEMPORARY PULL H  
HW-8593-SBZ  
Satin Bronze



CONTEMPORARY PULL H  
HW-8593-SN  
Satin Nickel



CONTEMPORARY PULL H  
HW-85996-DBAC  
Brushed Oil Rubbed Bronze



# CONTEMPORARY HARDWARE



CONTEMPORARY PULL H  
HW-85996-MB  
Matte Black



CONTEMPORARY PULL H  
HW-85996-SBZ  
Satin Bronze



CONTEMPORARY PULL H  
HW-85996-SN  
Satin Nickel



CONTEMPORARY PULL I  
HW-83996-BNBDL  
Brushed Pewter



CONTEMPORARY PULL I  
HW-83996-DBAC  
Brushed Oil Rubbed Bronze



CONTEMPORARY PULL I  
HW-83996-NI  
Polished Nickel



CONTEMPORARY PULL I  
HW-83996-SN  
Satin Nickel



CONTEMPORARY PULL I  
HW-839128-BNBDL  
Brushed Pewter



CONTEMPORARY PULL I  
HW-839128-DBAC  
Brushed Oil Rubbed Bronze



CONTEMPORARY PULL I  
HW-839128-NI  
Polished Nickel



CONTEMPORARY PULL I  
HW-839128-SN  
Satin Nickel



# TRANSITIONAL HARDWARE



TRANSITIONAL KNOB A  
HW-435L-BNBDL  
Brushed Pewter



TRANSITIONAL KNOB A  
HW-435L-SN  
Satin Nickel



TRANSITIONAL PULL A  
HW-43596-BNBDL  
Brushed Pewter



TRANSITIONAL PULL A  
HW-43596-SN  
Satin Nickel



TRANSITIONAL PULL A  
HW-435128-BNBDL  
Brushed Pewter



TRANSITIONAL PULL A  
HW-435128-SN  
Satin Nickel



TRANSITIONAL KNOB B  
HW-MO6303-DBAC  
Brushed Oil Rubbed Bronze



TRANSITIONAL KNOB B  
HW-MO6303-SBZ  
Satin Bronze



TRANSITIONAL KNOB B  
HW-MO6303-SN  
Satin Nickel



TRANSITIONAL PULL B  
HW-MO6373-DBAC  
Brushed Oil Rubbed Bronze



TRANSITIONAL PULL B  
HW-MO6373-SBZ  
Satin Bronze



TRANSITIONAL PULL B  
HW-MO6373-SN  
Satin Nickel



# TRANSITIONAL HARDWARE



TRANSITIONAL PULL C  
HW-38296-BNBDL  
Brushed Pewter



TRANSITIONAL PULL C  
HW-38296-DBAC  
Brushed Oil Rubbed Bronze



TRANSITIONAL PULL C  
HW-38296-SN  
Satin Nickel



TRANSITIONAL PULL C  
HW-382128-BNBDL  
Brushed Pewter



TRANSITIONAL PULL C  
HW-382128-DBAC  
Brushed Oil Rubbed Bronze



TRANSITIONAL PULL C  
HW-382128-SN  
Satin Nickel



TRANSITIONAL KNOB D  
HW-484-BNBDL  
Brushed Pewter



TRANSITIONAL KNOB D  
HW-484-DBAC  
Brushed Oil Rubbed Bronze



TRANSITIONAL KNOB D  
HW-484-MB  
Matte Black



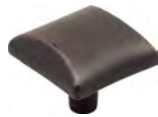
TRANSITIONAL KNOB D  
HW-484-SBZ  
Satin Bronze



TRANSITIONAL KNOB D  
HW-484-SN  
Satin Nickel



TRANSITIONAL KNOB E  
HW-525-BNBDL  
Brushed Pewter



TRANSITIONAL KNOB E  
HW-525-DBAC  
Brushed Oil Rubbed Bronze



TRANSITIONAL KNOB E  
HW-525-MB  
Matte Black



TRANSITIONAL KNOB E  
HW-525-SBZ  
Satin Bronze



TRANSITIONAL KNOB E  
HW-525-SN  
Satin Nickel



TRANSITIONAL PULL E  
HW-52596-BNBDL  
Brushed Pewter



TRANSITIONAL PULL E  
HW-52596-DBAC  
Brushed Oil Rubbed Bronze



TRANSITIONAL PULL E  
HW-52596-MB  
Matte Black



TRANSITIONAL PULL E  
HW-52596-SBZ  
Satin Bronze



TRANSITIONAL PULL E  
HW-52596-SN  
Satin Nickel



TRANSITIONAL KNOB F  
HW-449-BNBDL  
Brushed Pewter



TRANSITIONAL KNOB F  
HW-449-DBAC  
Brushed Oil Rubbed Bronze



TRANSITIONAL KNOB F  
HW-449-MB  
Matte Black



# TRANSITIONAL HARDWARE



TRANSITIONAL KNOB F  
HW-449-PC  
Polished Chrome



TRANSITIONAL KNOB F  
HW-449-SBZ  
Satin Bronze



TRANSITIONAL KNOB F  
HW-449-SN  
Satin Nickel



TRANSITIONAL PULL F  
HW-44996-BNBDL  
Brushed Pewter



TRANSITIONAL PULL F  
HW-44996-DBAC  
Brushed Oil Rubbed Bronze



TRANSITIONAL PULL F  
HW-44996-MB  
Matte Black



TRANSITIONAL PULL F  
HW-44996-PC  
Polished Chrome



TRANSITIONAL PULL F  
HW-44996-SBZ  
Satin Bronze



TRANSITIONAL PULL F  
HW-44996-SN  
Satin Nickel



TRANSITIONAL KNOB G  
HW-1091-BNBDL  
Brushed Pewter



TRANSITIONAL KNOB G  
HW-1091-DBAC  
Brushed Oil Rubbed Bronze



TRANSITIONAL KNOB G  
HW-1091-SN  
Satin Nickel



TRANSITIONAL PULL G  
HW-1092-BNBDL  
Brushed Pewter



TRANSITIONAL PULL G  
HW-1092-DBAC  
Brushed Oil Rubbed Bronze



TRANSITIONAL PULL G  
HW-1092-SN  
Satin Nickel



TRANSITIONAL PULL G  
HW-1092128BNBDL  
Brushed Pewter



TRANSITIONAL PULL G  
HW-1092128-DBAC  
Brushed Oil Rubbed Bronze



TRANSITIONAL PULL G  
HW-1092128-SN  
Satin Nickel



TRANSITIONAL KNOB H  
HW-944-DBAC  
Brushed Oil Rubbed Bronze



TRANSITIONAL KNOB H  
HW-944-MB  
Matte Black



TRANSITIONAL KNOB H  
HW-944-SBZ  
Satin Bronze



TRANSITIONAL KNOB H  
HW-944-SN  
Satin Nickel



TRANSITIONAL PULL H  
HW-94496-DBAC  
Brushed Oil Rubbed Bronze



TRANSITIONAL PULL H  
HW-94496-MB  
Matte Black

# TRANSITIONAL HARDWARE



TRANSITIONAL PULL H  
HW-94496-SBZ  
Satin Bronze



TRANSITIONAL PULL H  
HW-94496-SN  
Satin Nickel



TRANSITIONAL PULL H  
HW-944128-DBAC  
Brushed Oil Rubbed Bronze



TRANSITIONAL PULL H  
HW-944128-MB  
Matte Black



TRANSITIONAL PULL H  
HW-944128-SBZ  
Satin Bronze



TRANSITIONAL PULL H  
HW-944128-SN  
Satin Nickel



TRANSITIONAL PULL I  
HW-80814-DBAC  
Brushed Oil Rubbed Bronze



TRANSITIONAL PULL I  
HW-80814-PC  
Polished Chrome



TRANSITIONAL PULL I  
HW-80814-SN  
Satin Nickel



TRANSITIONAL KNOB J  
HW-658-NI  
Polished Nickel



TRANSITIONAL KNOB J  
HW-658-SBZ  
Satin Bronze



TRANSITIONAL KNOB J  
HW-658-SN  
Satin Nickel



TRANSITIONAL PULL J  
HW-65896-NI  
Polished Nickel



TRANSITIONAL PULL J  
HW-65896-SBZ  
Satin Bronze



TRANSITIONAL PULL J  
HW-65896-SN  
Satin Nickel



TRANSITIONAL PULL J  
HW-658128-NI  
Polished Nickel



TRANSITIONAL PULL J  
HW-658128-SBZ  
Satin Bronze



TRANSITIONAL PULL J  
HW-658128-SN  
Satin Nickel



# TRADITIONAL HARDWARE



TRADITIONAL KNOB A  
HW-117-BNBDL  
Brushed Pewter



TRADITIONAL KNOB A  
HW-117-DBAC  
Brushed Oil Rubbed Bronze



TRADITIONAL KNOB A  
HW-117-SBZ  
Satin Bronze



TRADITIONAL KNOB A  
HW-117-SN  
Satin Nickel



TRADITIONAL PULL A  
HW-527-BNBDL  
Brushed Pewter



TRADITIONAL PULL A  
HW-527-DBAC  
Brushed Oil Rubbed Bronze



TRADITIONAL PULL A  
HW-527-SBZ  
Satin Bronze



TRADITIONAL PULL A  
HW-527-SN  
Satin Nickel



TRADITIONAL PULL A  
HW-527128-BNBDL  
Brushed Pewter



TRADITIONAL PULL A  
HW-527128-DBAC  
Brushed Oil Rubbed Bronze



TRADITIONAL PULL A  
HW-527128-SBZ  
Satin Bronze



TRADITIONAL PULL A  
HW-527128-SN  
Satin Nickel



# TRADITIONAL HARDWARE



TRADITIONAL KNOB B  
HW-3980-BNBDL  
Brushed Pewter



TRADITIONAL KNOB B  
HW-3980-DBAC  
Brushed Oil Rubbed Bronze



TRADITIONAL KNOB B  
HW-3980-SN  
Satin Nickel



TRADITIONAL PULL B  
HW-Z29096-BNBDL  
Brushed Pewter



TRADITIONAL PULL B  
HW-Z29096-DBAC  
Brushed Oil Rubbed Bronze



TRADITIONAL PULL B  
HW-Z29096-SN  
Satin Nickel



TRADITIONAL PULL B  
HW-Z290128BNBDL  
Brushed Pewter



TRADITIONAL PULL B  
HW-Z290128-DBAC  
Brushed Oil Rubbed Bronze



TRADITIONAL PULL B  
HW-Z290128-SN  
Satin Nickel



TRADITIONAL KNOB C  
HW-2980-BNBDL  
Brushed Pewter



TRADITIONAL KNOB C  
HW-2980-DBAC  
Brushed Oil Rubbed Bronze



TRADITIONAL KNOB C  
HW-2980-MB  
Matte Black



TRADITIONAL KNOB C  
HW-2980-PC  
Polished Chrome



TRADITIONAL KNOB C  
HW-2980-SBZ  
Satin Bronze



TRADITIONAL KNOB C  
HW-2980-SN  
Satin Nickel



TRADITIONAL PULL C  
HW-2981-BNBDL  
Brushed Pewter



TRADITIONAL PULL C  
HW-2981-DBAC  
Brushed Oil Rubbed Bronze



TRADITIONAL PULL C  
HW-2981-MB  
Matte Black



TRADITIONAL PULL C  
HW-2981-PC  
Polished Chrome



TRADITIONAL PULL C  
HW-2981-SBZ  
Satin Bronze



TRADITIONAL PULL C  
HW-2981-SN  
Satin Nickel



TRADITIONAL KNOB D  
HW-Z117-BNBDL  
Brushed Pewter



TRADITIONAL KNOB D  
HW-Z117-DBAC  
Brushed Oil Rubbed Bronze



TRADITIONAL KNOB D  
HW-Z117-SN  
Satin Nickel



# TRADITIONAL HARDWARE



TRADITIONAL PULL E  
HW-8233-DBAC  
Brushed Oil Rubbed Bronze



TRADITIONAL PULL E  
HW-8233-SN  
Satin Nickel



TRADITIONAL KNOB F  
HW-3910-BNBDL  
Brushed Pewter



TRADITIONAL KNOB F  
HW-3910-DBAC  
Brushed Oil Rubbed Bronze



TRADITIONAL KNOB F  
HW-3910-MB  
Matte Black



TRADITIONAL KNOB F  
HW-3910-PC  
Polished Chrome



TRADITIONAL KNOB F  
HW-3910-SBZ  
Satin Bronze



TRADITIONAL KNOB F  
HW-3910-SN  
Satin Nickel



TRADITIONAL KNOB G  
HW-897L-DBAC  
Brushed Oil Rubbed Bronze



TRADITIONAL KNOB G  
HW-897L-SN  
Satin Nickel



TRADITIONAL PULL G  
HW-8973-DBAC  
Brushed Oil Rubbed Bronze



TRADITIONAL PULL G  
HW-8973-SN  
Satin Nickel



TRADITIONAL KNOB H  
HW-110-DBAC  
Brushed Oil Rubbed Bronze



TRADITIONAL KNOB H  
HW-110-SN  
Satin Nickel



TRADITIONAL PULL H  
HW-1103-DBAC  
Brushed Oil Rubbed Bronze



TRADITIONAL PULL H  
HW-1103-SN  
Satin Nickel





# Medallion™

One Medallion Way  
Waconia, MN 55387

medallioncabinetry.com



## PRODUCT AVAILABILITY

Styles and product availability may vary slightly from those shown in this guide due to material availability and/or improvements to our designs. Specifications are subject to change without notice.

## PHOTOGRAPHY LIMITATIONS

Product photography and illustrations have been reproduced as accurately as print and web technologies permit. To ensure highest satisfaction, we suggest you view an actual sample from your nearest Medallion dealer for best color, wood grain and finish representation.

Photo: (PLATINUM) Stockton in Lynx on quartersawn oak;  
(GOLD) Wallace Reverse Raised Panel in Kestrel and  
Mission Reverse Raised Panel in Caribou on quartersawn oak  
Transitional Knob and Pull H in Matte Black



• A Cabinetworks Group brand

©2023 ACPI Wood Products, LLC  
MDHWARE1023\_digital

